

# Liverpool City Region Careers Hub

To help every young person find their best next step



**LIVERPOOL  
CITY REGION**  
COMBINED AUTHORITY

**METROMAYOR**  
LIVERPOOL CITY REGION

Liverpool City  
Region  
CAREERS HUB

THE CAREERS &  
ENTERPRISE  
COMPANY

## LCR Careers Hub Annual Conference November 2023

### LCR Be More Slides

# BE MORE



## LCRCA Careers Hub Conference 2023

Kamal Choudhary & Anna Gorman-Cargill



**LIVERPOOL  
CITY REGION**  
COMBINED AUTHORITY

**METROMAYOR**  
LIVERPOOL CITY REGION

Part funded by the European Social Fund



**European Union**  
European  
Social Fund

# Access **tailored** advice & guidance



*Access*

*Tailored Career Advice and guidance.*

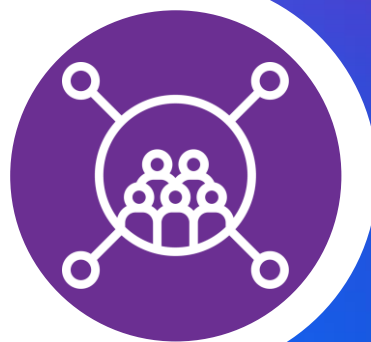
**Journey so far...**



**Progression  
Pathways**



**Digital Prospectus**



# Journey so far...



- Launched October 2022
- Over 208k unique page views
- Over 1100 registered downloads
- Over 1700 events shared – 99% external
- National Award winners!
- What's new?





# Progression Pathways



- Occupational Maps set out all occupations that can be through ATE
- Developed by IFATE and approved by employers
- The maps provides basis for **planning, development** and communication of Technical Education



[Home](#) [About](#) [Contact](#) [Help](#) [Privacy](#) [Feedback](#) [Terms](#) [Sitemap](#)

---

**Are you a local employer?**  
 Access BEB Employer advice and guidance for every apprenticeship from our team of specialist LMAE Employer Support Officers.

**Local Offers**

High salaries to be made with apprentices! Working at local businesses can be a great experience and a great way to gain experience. Find out more about the opportunities available in your area.

**Local Assessment**

Assess & certify your apprenticeship at The Park Day. Find out more about the assessment process and how to prepare for it.

**Local Growth**

High salaries to be made with apprentices! Working at local businesses can be a great experience and a great way to gain experience. Find out more about the opportunities available in your area.

**Local Growth Services**

Click on the area to see the number of vacancies and the average salary

**Occupational map**

**How can we support you?**

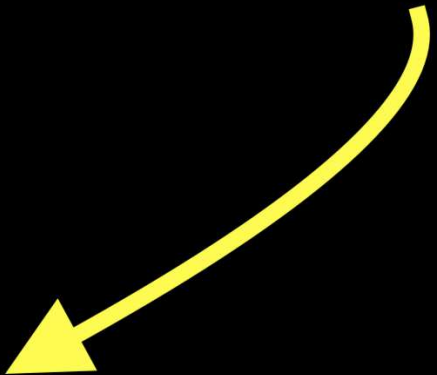
**Find your perfect apprenticeship**

[Accounting](#) [Beauty and Personal Care](#) [Education](#) [Engineering](#) [Health and Social Care](#) [Retail and Wholesale](#) [Construction](#) [Creative and Media](#) [Digital](#) [Finance and Business](#) [Food and Drink](#) [Healthcare](#) [IT](#) [Manufacturing](#) [Professional Services](#) [Public Services](#) [Retail and Wholesale](#) [Transport and Logistics](#) [Other](#)

**YOU'VE GOT THIS**

**LOVE YOUR JOB**

**Local Offers**



# of vacancies and the average salary

Job category  
Banking



## Occupational map

Explore the IfATE occupational maps by selecting a route below:

- Agriculture, environmental and animal care
- Business and administration
- Care services
- Catering and hospitality
- Construction and the built environment
- Creative and design
- Digital
- Education and early years
- Engineering and manufacturing
- Hair and beauty
- Health and science
- Legal, finance and accounting
- Protective services
- Sales, marketing and procurement
- Transport and logistics



**Apprenticeship Opportunities**  
Apprenticeships are a great way to either start your career or for those seeking a new challenge or career progression. Currently the number of available apprenticeship opportunities is:

**Job Vacancies**  
The Liverpool City Region has 1000's of employment opportunities across its 6 local authority areas. These jobs represent most industries at all levels. At present, the number of employment opportunities available is:

**Average Salary**  
Based upon the 1000's of employment opportunities available throughout the Liverpool City Region, made up of various roles at varying levels. The average salary for all of the roles currently available is:



# BE MORE

Apprenticeship

Youth Hub

Careers

News / Features

Employer support

LCR Jobs

Sign in | Sign up

## Engineering and manufacturing



Icons in use 

Engineering, Design and Development



Engineering, Manufacturing, Process and Control



Maintenance, Installation & Repair



Engineering and manufacturing HATE Occupational maps

Items in use 1

Engineering, Design and Development

1. Design and development technician

Engineering design and draughtsperson - Control & Instrumentation

Level 3 Mid green occupation HTQ TL

Engineering design and draughtsperson - Piping

Level 3 Dark green occupation HTQ TL

New furniture product developer

Level 3 Mid green occupation HTQ TL

Engineering design and draughtsperson - Electrical

Level 3 Mid green occupation HTQ TL

Engineering design and draughtsperson - Structural

Level 3 Mid green occupation HTQ TL

Railway engineering design technician

Level 3 Mid green occupation HTQ TL

Engineers - Mechanical

Level 3 Mid green occupation HTQ TL

Fitted Furniture Level

Level 3 Mid green occupation HTQ TL

An apprenticeship is employment with training to industry standards in a recognised occupation. It will involve a substantial programme of on and off-the-job training. Read more on the glossary of terms.

2. Design and development technical manager

Engineering manufacturing technician

Level 5 Mid green occupation HTQ TL

Space engineering technician

Level 6 Mid green occupation TL

Product development manager

Level 5 Mid green occupation HTQ TL

Technical dyer and colourist

Level 7 Mid green occupation HTQ TL

Senior cad engineer

Level 5 Mid green occupation HTQ TL

3. Design and development engineer

Advanced robotics engineer

Level 7 Mid green occupation TL

Chemical engineer

Level 7 Mid green occupation TL

Electronic systems principal engineer

Level 7 Mid green occupation TL

Human factors specialist

Level 7 Mid green occupation TL

Mechanical engineer

Level 7 Mid green occupation TL

Postgraduate engineer - Decommissioning/Disposal Engineer

Level 7 Mid green occupation TL

Naval architect

Level 7 Mid green occupation TL

Aerospace engineer

Level 7 Mid green occupation TL

Digital manufacturing engineering leader

Level 7 Mid green occupation TL

Embedded electronic design and development engineer

Level 7 Mid green occupation TL

Light water reactor scientist and engineer

Level 7 Mid green occupation TL

Medical device or medical engineer

Level 7 Mid green occupation TL

Mechanical engineer

Level 7 Mid green occupation TL

Postgraduate engineer - Decommissioning/Disposal Engineer

Level 7 Mid green occupation TL

Aerospace software development engineer

Level 7 Mid green occupation TL

Electro-Mechanical engineer

Level 7 Mid green occupation TL

Geotechnical engineer

Level 7 Mid green occupation TL

Materials science technologist

Level 7 Mid green occupation TL

Naval architect

Level 7 Mid green occupation TL

Medical device or medical engineer

Level 7 Mid green occupation TL

Engineering, Manufacturing, Process and Control

Maintenance, Installation & Repair

# Engineering and manufacturing



## Engineering, Design and Development

### 1. Design and development technician

Engineering design and draughtsperson -  
Control & Instrumentation

Level 3

Engineering design and draughtsperson -  
Electrical

Level 3

Engineering design and draughtsperson -  
Piping

Level 3

Engineering design and draughtsperson -  
Structural

Level 3

New furniture product developer

Railway engineering design technician

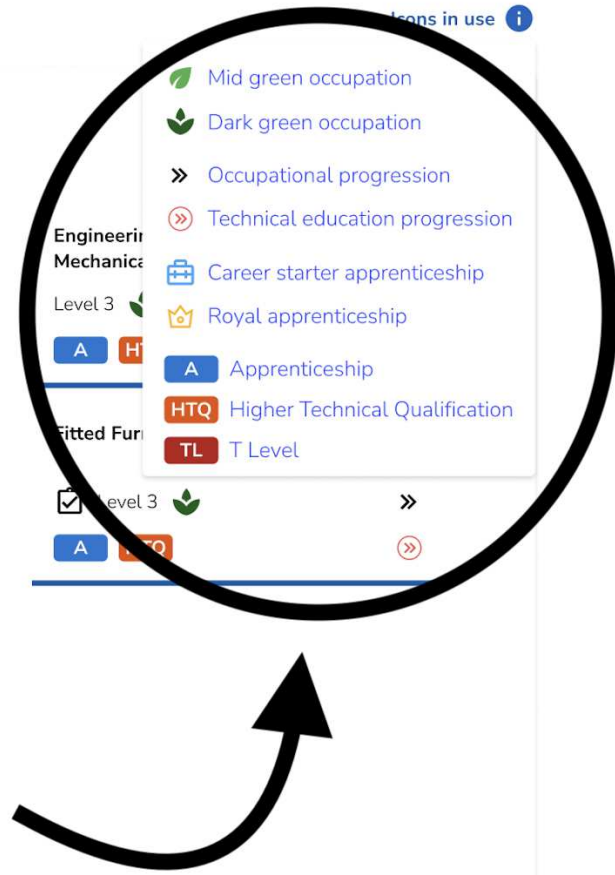
Level 3

### 2. Design and development technical manager

Engineering manufacturing technician

Product development manager

Senior cad engineer





Level 3 - Technical Occupation

 Mid green occupation

Engineering and manufacturing

## Engineering design and draughtsperson - Electrical

[View occupational progression >>](#)

[View occupational standart !\[\]\(fe3aebe81acea8d45108cd2768939da7\_img.jpg\)](#)

Producing engineering designs and drawings for components, structures and systems used in industrial and commercial construction.

### Summary

Engineering design and draughtspersons produce designs and drawings for structures, piping, electrical systems, control and instrumentation systems and mechanical components used in industrial and commercial construction. Typically, jobholders work in a wide range of industries of national importance including power and water infrastructure, petrochemical, oil and gas, nuclear, food and drink processing.

### Typical job titles include

Control and instrumentation design and draughtsperson | Electrical design and draughtsperson | Mechanical design and draughtsperson | Piping design and draughtsperson | structural design and draughtsperson

### Technical Educational Products

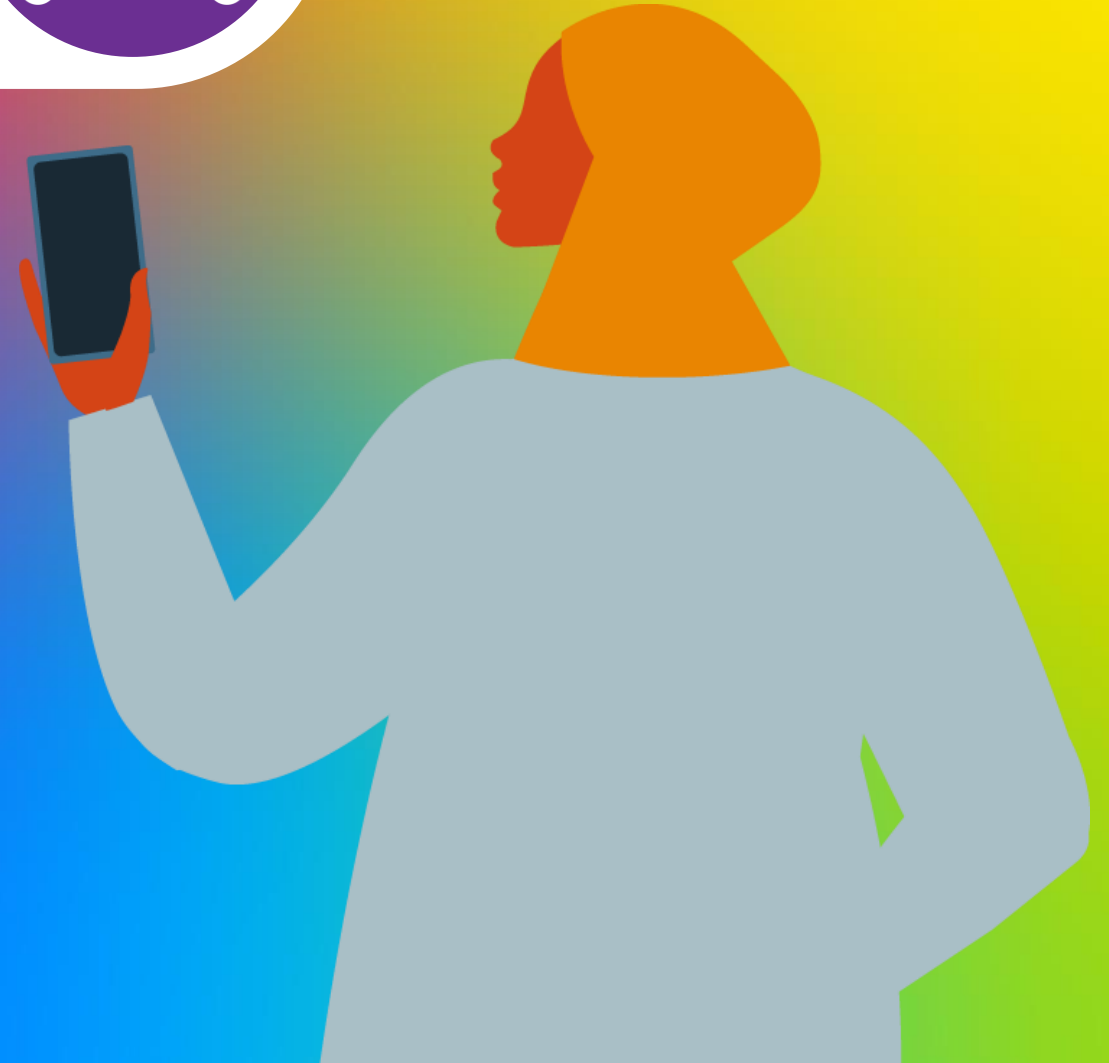
**A** ST0164: [Engineering Design & Draughtsperson - Electrical](#) (Level 3) Approved for delivery

**TL** TL0003a: [Design and development for engineering and manufacturing - Design and Development: Mechanical Engineering](#)  
(Level 3) Approved for delivery

# Digital Prospectus



- Interactive course finder for across Liverpool City Region
- Powered by data from the National Careers Service
- Create a personalised downloadable prospectus







What course would you like to study?



List View

## Welcome to LCR Learn

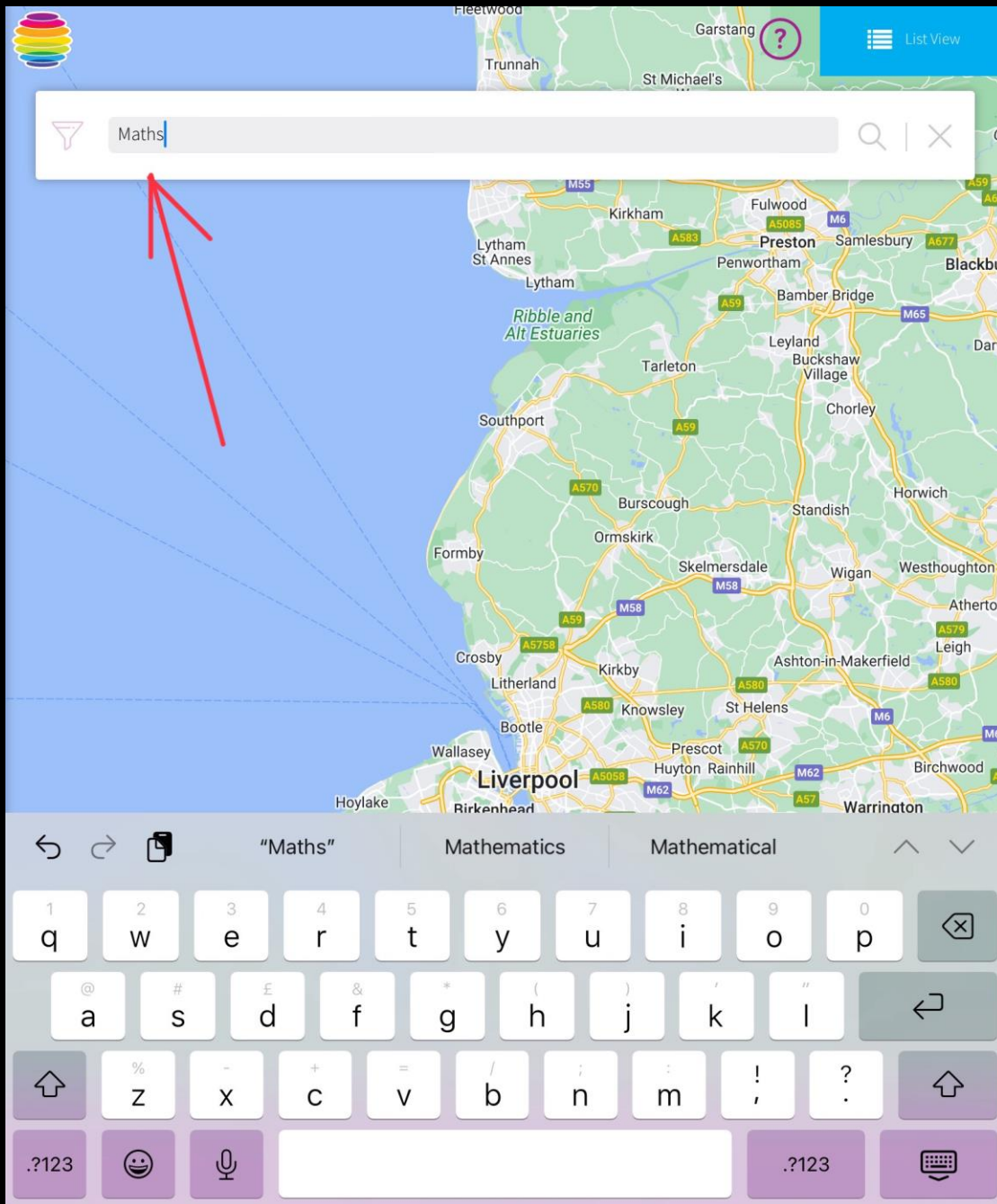
A digital online prospectus that allows users to search for courses and training across the Liverpool City Region.

To begin your journey, search for the name of the course/training provider/college you are interested in. If you are an employer, or self-employed, looking to access training for yourself or staff, [CLICK HERE](#) to access our Skills Brokerage Service who can provide further advice and support on training courses and funding available across the LCR. [Please click here for the tutorial video](#)

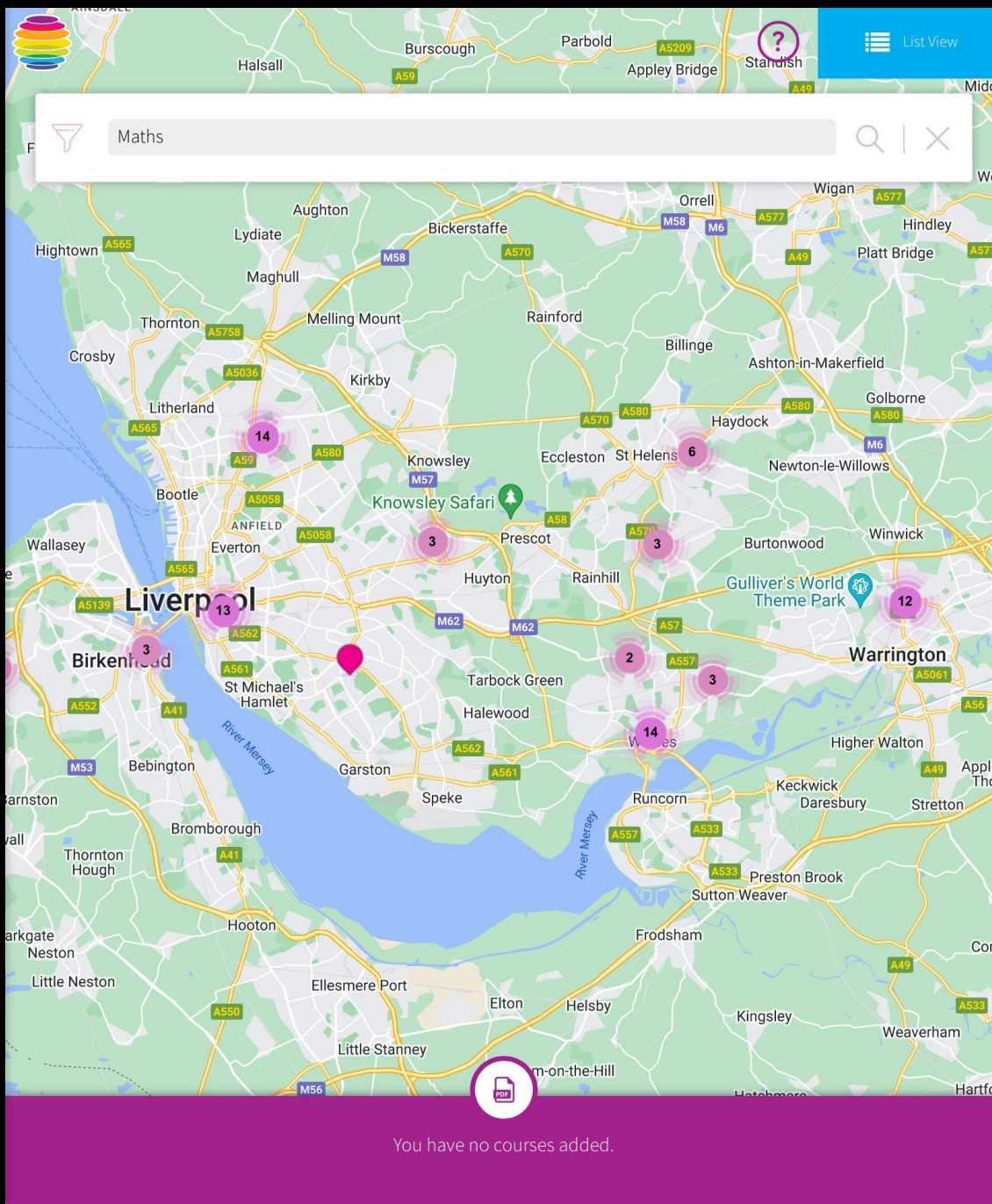


You have no courses added.





**Search for the  
course you want  
to find**



See the number of courses across the region

You have no courses added.

The image shows a search filter interface for courses. At the top, there is a search bar with the placeholder text "What course would you like to study?". Below the search bar, there are several filter sections, each with a title and a help icon (a circled 'i').

- Provider**: A text input field with the placeholder "Search Providers".
- Age**: A dropdown menu currently showing "Any".
- Area / Locality**: A text input field with the placeholder "Town or Postcode".
- Radius**: A horizontal slider ranging from 0 km to 50+ km, with a current selection at 25 km.
- Type**: A list of checkboxes for course types: "Access to Higher Education Diploma (from 2014 onwards)", "Award", "Certificate", and "Diploma". All are checked.
- Level**: A list of checkboxes for course levels: "Entry Level", "Level 1", "Level 2", and "Level 3". All are checked.
- Delivery Style**: A dropdown menu currently showing "Any".

At the bottom of the filter section, there is a link "+ View All Items". At the very bottom of the page, there are two buttons: "APPLY FILTERS" (in a purple box) and "CLEAR ALL FILTERS" (in a grey box).

Filter your Search



List View



Maths



← Go Back

## Warrington Campus



### Fast Track Maths Functional Skills

ADD COURSE

FIND OUT MORE

### Beginner's Maths Functional Skills

ADD COURSE

FIND OUT MORE

### Beginner's Maths Functional Skills

ADD COURSE

FIND OUT MORE

### Beginner's Maths Functional Skills

ADD COURSE

FIND OUT MORE

### Fast Track Maths Functional Skills

ADD COURSE

FIND OUT MORE

### Fast Track Maths Functional Skills

Explore  
each  
course

List View



Maths



← Go Back

## Fast Track Maths Functional Skills

Our Functional Skills qualifications are intended for anyone wishing to develop their maths. They focus on both the underpinning skills as well as the ability to apply maths to different contexts. The subject content is split into three areas: using numbers and the number system; using common measures, shape and space; and handling information and data / statistics. There is naturally much overlap between these sections and drawing on different areas will be encouraged.

### Location:

Warrington Campus  
Winwick Road  
WA2 8QA

**Subject Area** Preparation for Life and Work

**Qualification Type:** Functional Skills

**Provider:** WARRINGTON & VALE ROYAL COLLEGE

**Qualification Level:** Entry Level

**Attendance Time:** Daytime

**Study Mode:** Part Time

**Delivery Style:** Classroom Based

**Basic Skills:** Numeracy



List View

Maths

← Go Back

Warrington Campus

Fast Track Maths Functional Skills

✓

FIND OUT MORE

Beginner's Maths Functional Skills

ADD COURSE

FIND OUT MORE

Beginner's Maths Functional Skills

✓

FIND OUT MORE

Beginner's Maths Functional Skills

✓

FIND OUT MORE

Fast Track Maths Functional Skills

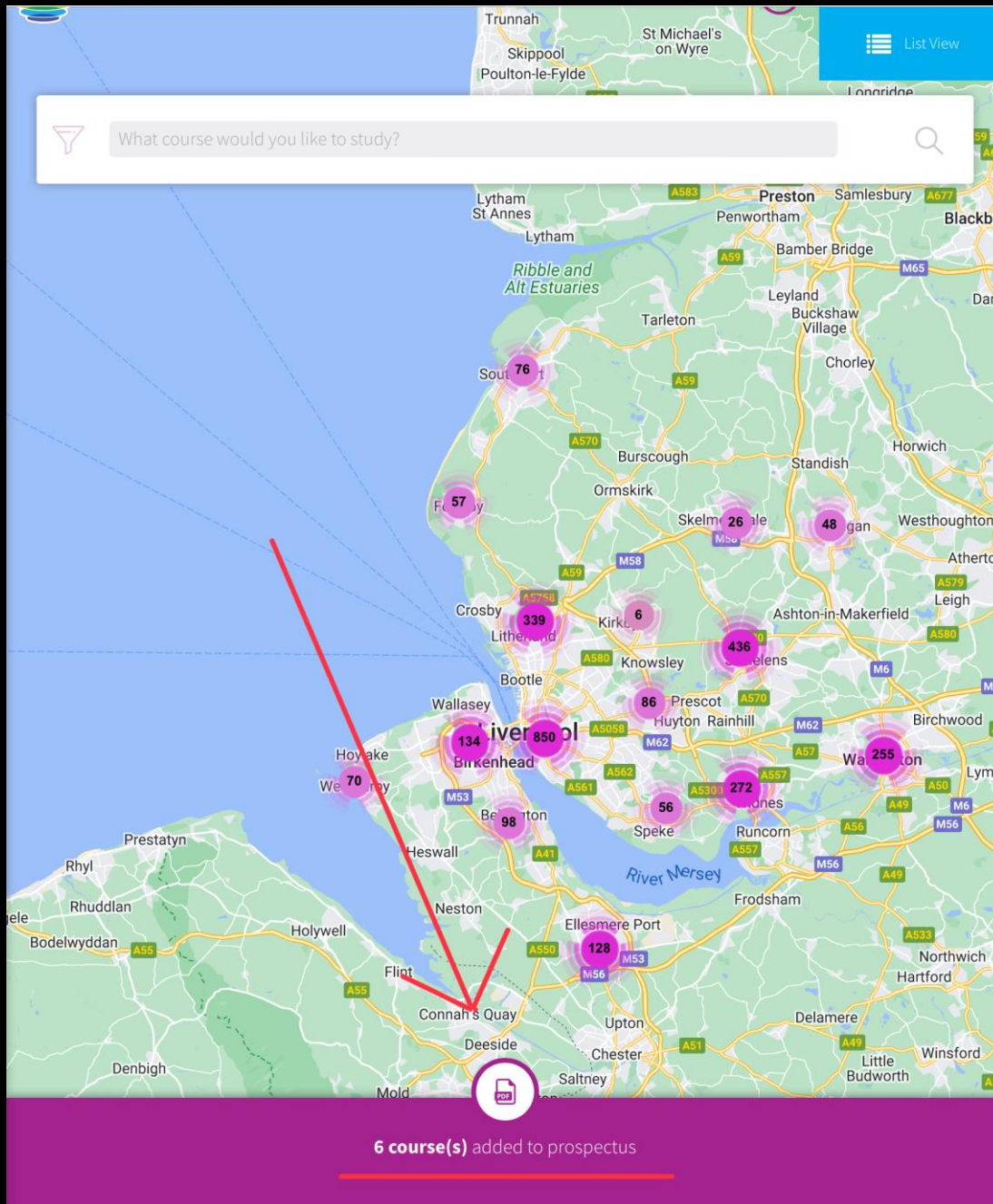
ADD COURSE

FIND OUT MORE

Fast Track Maths Functional Skills

**Add course to  
your  
prospectus**





**Download your  
personalised  
PDF prospectus**



# LCR LEARN COURSE PROSPECTUS



## FAST TRACK MATHS FUNCTIONAL SKILLS

**Course Category/Subject Area**  
Preparation for Life and Work

**Provider:**  
WARRINGTON & VALE ROYAL COLLEGE  
Warrington Campus  
Winwick Road  
WA2 8QA

**Qualification Level:** Entry Level

**Qualification Type:** Functional Skills

**Course Summary:** Our Functional Skills qualifications are intended for anyone wishing to develop their maths. They focus on both the underpinning skills as well as the ability to apply maths to different contexts. The subject content is split into three areas: using numbers and the number system; using common measures, shape and space; and handling information and data / statistics. There is naturally much overlap between these sections and drawing on different areas will be encouraged.

**Entry Requirements:** You will be required to complete an assessment prior to enrolling on the course to determine which level of Maths is most suitable, prior achievements will also be taken into account.

**Awarding Organisation:** City & Guilds of London Institute

**Attendance Time:** Daytime

**Study Mode:** Part Time

**Delivery Style:** Classroom Based

**Basic Skills:** Numeracy



## JCP ESOL PRE ENTRY INTRODUCTION

**Course Category/Subject Area**  
Preparation for Life and Work

**Provider:**  
LIVERPOOL CITY COUNCIL  
Park Road Adult Centre  
Park Road Adult Learning Centre  
L8 6SE

**Qualification Level:** Entry Level

**Qualification Type:** Other

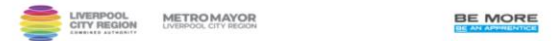
**Entry Requirements:** Learners of English at all levels from complete beginners up to Level 2. The courses include Family Learning and are most suitable for parents and carers. Some courses in Granby Centre are mainly for women. No prior knowledge needed.

**Awarding Organisation:** Generic award - no awarding body

**Attendance Time:** Daytime

**Study Mode:** Part Time

**Delivery Style:** Classroom Based



Explore and save your prospectus



## DIPLOMA IN WOMEN'S HAIRDRESSING

**Course Category/Subject Area**

Retail and Commercial Enterprise

**Provider:**

ST HELENS COLLEGE  
TOWN CENTRE CAMPUS  
WATER STREET  
WA10 1PP

**Qualification Level:** Level 3

**Qualification Type:** Diploma

**Course Summary:** Please check [www.knowsleycollege.ac.uk](http://www.knowsleycollege.ac.uk)

**Entry Requirements:** Please check [www.knowsleycollege.ac.uk](http://www.knowsleycollege.ac.uk)

**Awarding Organisation:** Vocational Training Charitable Trust

**Attendance Time:** Daytime

**Study Mode:** Full Time

**Delivery Style:** Classroom Based

**Booking URL**

[www.knowsleycollege.ac.uk](http://www.knowsleycollege.ac.uk)



# Book your course



LIVERPOOL  
CITY REGION  
COMBINED AUTHORITY

METROMAYOR  
LIVERPOOL CITY REGION

BE MORE  
BE AN APPRENTICE





**BE MORE**



# Any Questions?

